

SIGNAGE INFORMATION SHEET

WASTE 24 SUPPORT DOCUMENT

This WISH information document is aimed at health and safety improvements in the waste management industry. The Health and Safety Executive provided support to WISH in producing this guidance. This guidance may go further than the minimum you need to do to comply with the law with regard to health and safety

This information sheet is one of a series of supporting documents to WASTE 24 (Working on the Public Highway Street Cleaning). It should be read in conjunction with WASTE 24. This sheet covers signage. The other support sheets being INFO 14 on monitoring, INFO 15 on PPE, INFO 16 on risk assessment and INFO 18 on vehicles.

Contents

1. Introduction and scope
 2. General information
 3. Vehicle signage
 4. Basic road signs
 5. Traffic control by temporary obstruction
- Disclaimer and WISH
Useful links and further reading

1. Introduction and scope

This document is a guide to the types of signage you may require before completing any planned / unplanned cleansing on the highway. It contains information on the relevant material you may need to refer to and general information on signage for highway cleansing. Your initial risk assessment for the work should determine what is required in order to comply with the regulations and best practice.

2. General information

All signs used in traffic management must conform to the requirements laid out in Traffic Sign Manual Chapter 8 Part 2 - Traffic Safety Measures and Signs for Temporary Situations Part 1 – Design. The size, shape, and style of all signs, including traffic cones must conform to Traffic Signs Regulations and General Directions (TSRGD) 2016.

'Men at Work' triangular signs with 'Litter picking ahead', 'Single file traffic ahead' or 'Workforce in road' sub plates are appropriate to use on single lane carriageways. (Refer to your risk assessment to determine what is appropriate for the site.)

Signs that are placed on the side of the road must be made secure by using suitable weighting, normally sandbags.

Signage must only be deployed by LANTRA or similar certified trained operatives and their training must be relevant to the correct National Highways Sector Scheme.

All signage that is deployed must have the name of the organisation that owns the signs clearly marked on the rear of the sign.

Signage shall be placed at appropriate positions to warn traffic in both direction but not obscure the view of the road users or block footways.

All signage is to be removed on the completion of work by trained operatives.

It is strongly recommended that, unless you have the qualified staff in house (see Training information sheet), complex, medium, or long-term traffic management is designed and deployed by a specialist traffic Management Company. They will also be able to advise on the requirement for Temporary Traffic Restriction Orders.

3. Vehicle signage

Note – please also see INFO 18 'Vehicles' information sheet.

For mobile works, as well as having chevrons on the reverse and being equipped with one or more amber warning beacons, a blue '610' arrow 'Keep Right' / 'Keep Left' sign should also be displayed to the rear of the vehicle.

Waste Industry Safety and Health Forum

Beacons must be used when the vehicle is travelling at less than the normal speed of traffic and when it is pulling onto or off of the carriageway. For short duration static works the beacons should remain on at all times.

Vehicle mounted 'Keep Right' / 'Keep Left' signs must be covered when the vehicle is travelling to and from the site – do not just turn the sign up or down. Developments in roadworks signage has led to more flexible options being available – including 'light arrows' for use on the rear of vehicles, these should be turned off when not required.



Examples shown above are for illustrative purposes only.

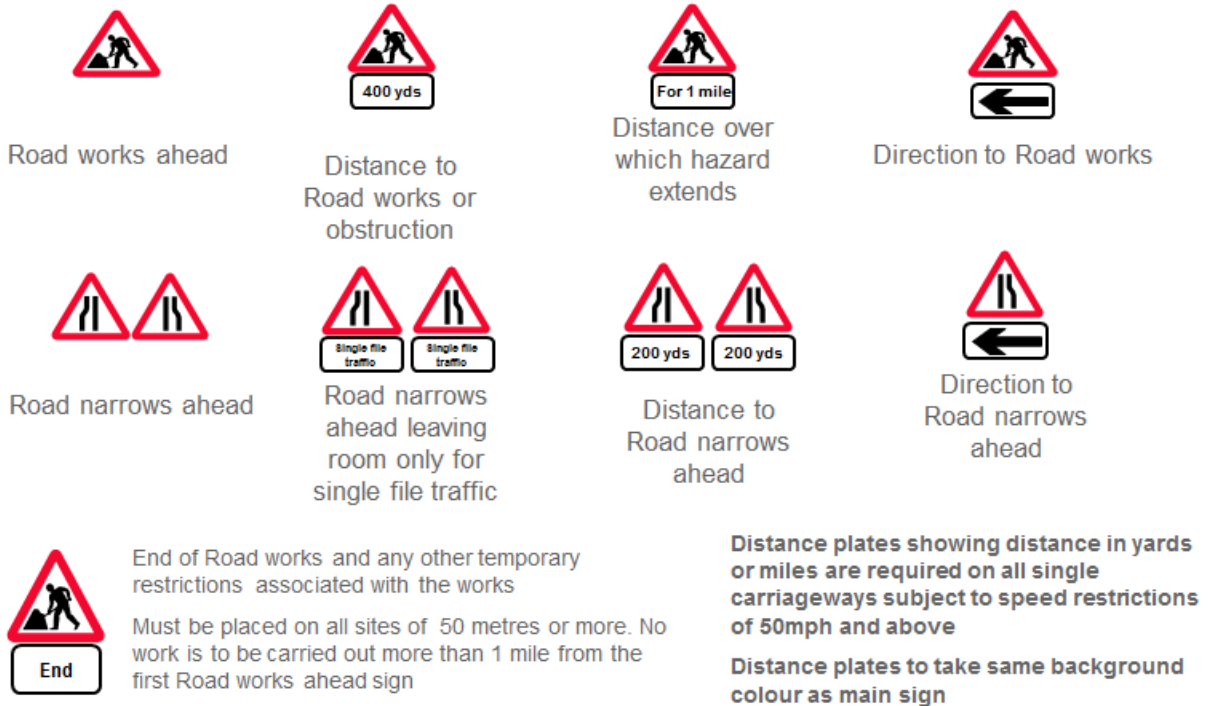
4. Basic road signs

There are a variety of basic road signs for both mobile and temporary works, some of which must be displayed as per the regulations and some are advisory to give the motorist additional information (sub plates). Refer to 'Safety at Street works and Roadworks' a code of practice (red book) and The Traffic Signs Regulations and General Direction 2016 to determine mandatory and advisory signs. Any road works signs must be deployed by LANTRA (or equivalent) trained and competent operatives.

All signs deployed on the highway must be in good condition, clean, clear and legible, and the right size for the road (determined by speed). Refer to the chart on page 105 of the red book (Safety at Streetworks and Roadworks).

Waste Industry Safety and Health Forum

Examples of commonly used signs are illustrated below. Refer to Safety in Streetworks and Roadworks for what is required.



Once road signs have been deployed, review and ask two questions:

- “Will someone using the road or footway from any direction understand what is happening and what is expected of them?”
- “Have I made the site safe to work in and for the general public - pedestrians & motorists?”

5. Traffic control by temporary obstruction

The use of this sign is not covered in TSRGD 2016 (refer to Safety at Streetworks and Roadworks: a code of practice, page 73) and this method of traffic control must only be used if **all** of the following apply:

- The relevant Highways Authority must agree in advance that this method can be used (it is suggested that this is obtained in writing)

Waste Industry Safety and Health Forum

- All other options have been reviewed and discounted (e.g. it would take longer to put out TM than it would to cleanse the location)
- Traffic data for the area shows that the number of vehicles is very low (e.g. rural 60 MPH road)

It is recommended that signs giving advanced notice of the temporary obstruction are deployed 7 days prior the work taking place. (You can also alert motorists by asking for advanced warning on the local authority website and by notifying local radio stations.)

Traffic must be delayed for no more than 15 minutes at any one time and there must be at least one hour between each deployment. The 15 minutes starts from the time the sign is deployed, irrespective of traffic.

The signs must be placed within sight of the works.

The method of obstructing the road and the cleansing activities must be such that operatives are able to reopen the road immediately for emergency services or on request from an appropriate authority such as the Highways Agency.

It is an offence under section 137 of the Highways Act to obstruct the highway without lawful excuse, so ensure you have researched other options thoroughly prior to using this method.

Operatives must complete the Highways Sector Scheme 12D M2 'Static works on single carriageways' course before deploying the obstruction signs.



Disclaimer and WISH

This information document has been prepared by health and safety practitioners to assist health and safety improvements in the waste management industry. It is endorsed by the WISH (Waste Industry Safety and Health) Forum. This information document is not formal guidance and represents good practice, which typically goes beyond the strict requirements of health and safety law.

Nothing in this information document constitutes legal or other professional advice and no warranty is given nor liability accepted (to the fullest extent permitted under law) for any loss or damage suffered or incurred as a consequence of reliance on this document. WISH accepts no liability (to the fullest extent permitted under law) for any act or omission of any persons using this document.

This information document is not a substitute for duty holder and/or professional safety advisor's judgment, Notwithstanding the good practice in this document, duty holders are responsible for ascertaining the sufficiency and adequacy of their internal and independent procedures for verifying and evaluating their organisation's compliance with safety law.

The Waste Industry Safety and Health (WISH) Forum exists to communicate and consult with key stakeholders, including local and national government bodies, equipment manufacturers, trade associations, professional associations and trade unions. The aim of WISH is to identify, devise and promote activities to improve industry health and safety performance.

Links and further reading

- Traffic Signs Regulations and General Directions 2016:
<http://www.legislation.gov.uk/uksi/2016/362/contents/made>
- Safety at Street Works and Road Works; A Code of Practice ('The Red Book'):
<https://www.gov.uk/government/publications/safety-at-street-works-and-road-works>
- Waste 24: Working on the public highway (street cleansing):
<https://wishforum.org.uk/wp-content/uploads/2017/02/WASTE-24-.pdf>
- National Highways Sector Schemes – Certification:
<https://www.gov.uk/guidance/national-highway-sector-schemes-certification-for-contractors-and-subcontractors>
- LANTRA Awards – Traffic Management:
https://www.lantra.co.uk/search?keywords=&content=course§ion=All&f%5B0%5D=categories%3A4446&f%5B1%5D=_subcategory%3A5390